



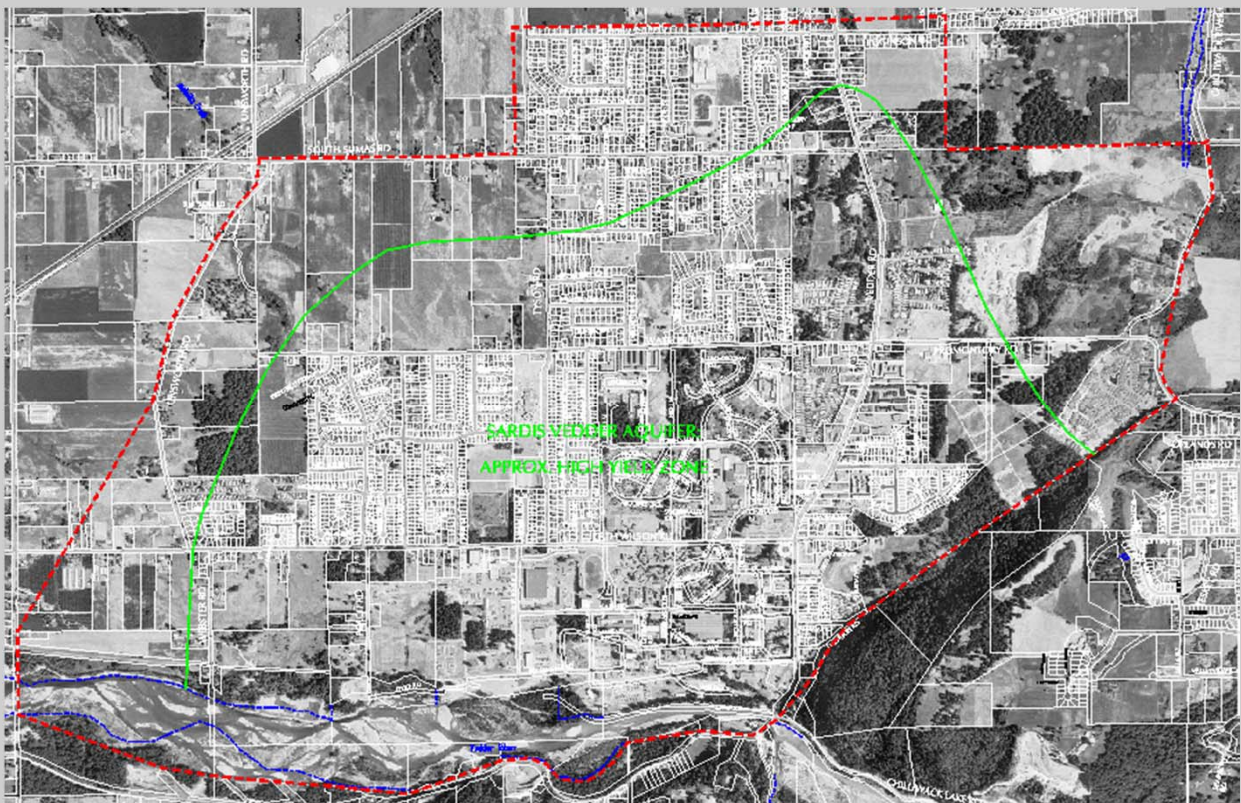
Case History STORM WATER MANAGEMENT

SPERLING
HANSEN
ASSOCIATES

Aquifer Storm Water Management Study, District of Chilliwack

- *The District of Chilliwack relies upon a near surface, unconfined aquifer to supply potable water to a population of over 60,000 people.*
- *Storm water soak away pits were identified as potential sources of groundwater contamination.*
- *Project involved:*
 - *Assessing existing drainage infrastructure for design and risk of pollution.*
 - *Completing a risk assess for groundwater vulnerability. water*
 - *Recommending construction, maintenance and emergency response mechanisms.*
 - *Recommending a Storm Water Management Plan.*
 - *Examining existing bylaw and specifications with regard to storm water disposal.*
- *SHA and KWL project team provided a comprehensive review of potential contamination risks, developed a technical storm water management plan and provided specifications, policy and bylaw recommendations.*

District of Chilliwack Contact: Kirsti Domay, Environmental Manager (604) 793-2958



SPERLING HANSEN ASSOCIATES

#8-1225 East Keith Road, North Vancouver, B.C.

Phone (604) 986-7723 Fax (604) 986-7734

E-Mail: sperling@sperlinghansen.com

- ***Landfill Siting***
- ***Landfill Closure***
- ***Hydrogeological Investigations***
- ***Environmental Monitoring***
- ***Design and Operations Plans***